

2014/15 Plan of Work

Neil Stephens

Current Position

Priority sectors

Small Sites (35%) – 45% delivered

Refurbishment (25%) – 36%

Asbestos (20%) – 12%

Major Projects & Large Contractors (5%) - 1%

Local Priorities (15%) – 6%

2013/14 - Updates

**Priority sectors remain with slight change
and added in home build**

Small Sites (35%)

Refurbishment (30%)

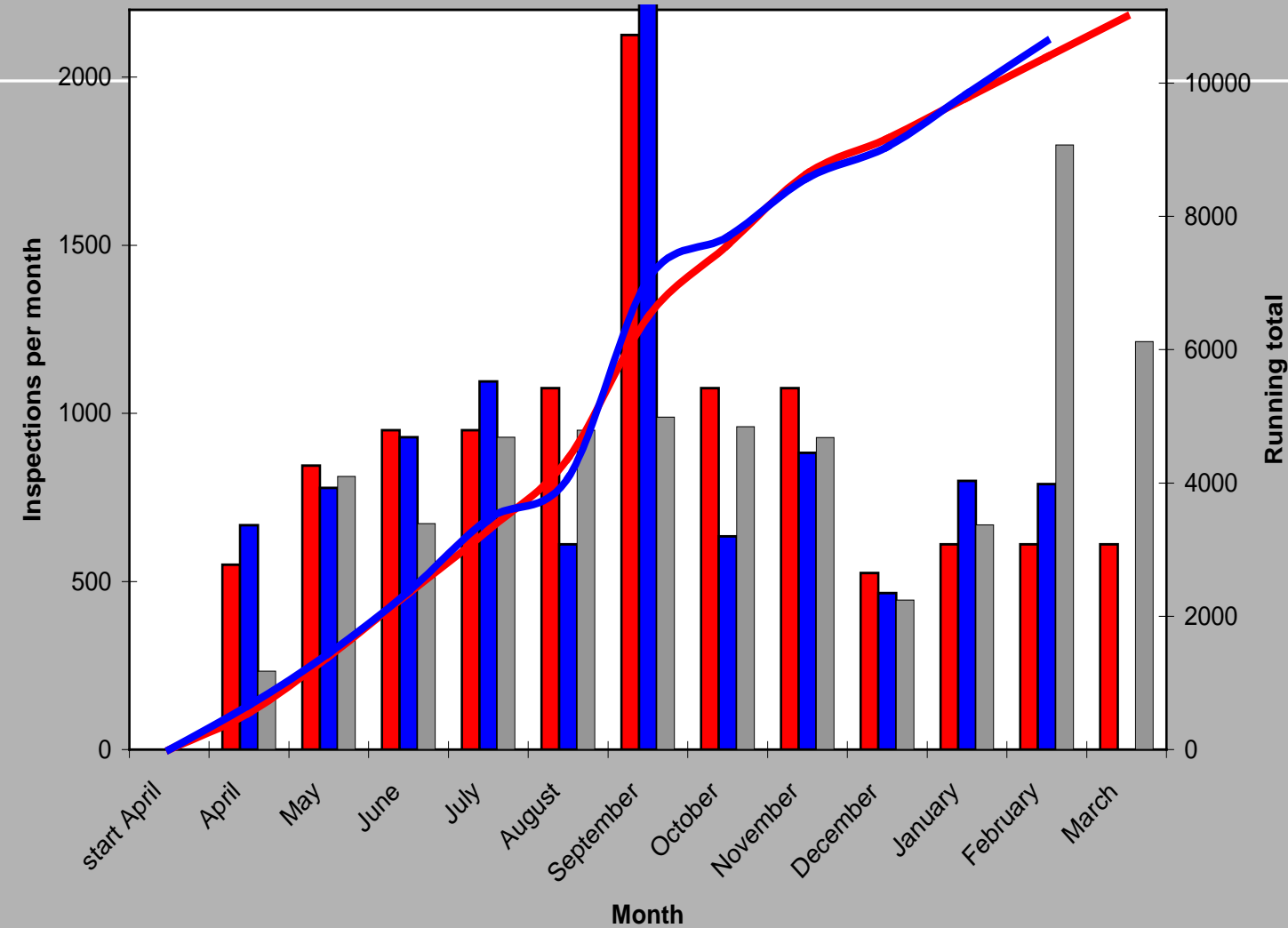
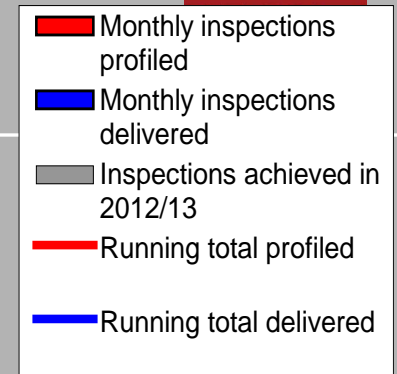
Asbestos (11%)

Home build (5%)

Major Projects & Large Contractors (5%)

Local Priorities (15%)

Proactive Inspection Profile and Performance 2013/14



Key Themes for 2014/15.....

- Start a step change in Occupational Disease and ill health **prevention**
- Promote CDM messages, e.g.
 - Role of Client
 - Reduce paperwork
- Track-back to CDM duty holders
- Promote involvement in CDM 2015 consultation
- Continue support for WWT
- Promote LWIT as a tool for improvement
- Notify illegal employment of Migrant workers
- WWT – 60 events & 2 new groups

Approach to visits remains same

- Matters of Evident Concern
 - Inc' migrant workers
- Matters of potential major concern, e.g.
 - Structural collapse
 - Fire
 - Cranes & lifting
- Normal visit priorities
 - Asbestos, Respiratory Risks, WAH, Manual Handling, Site Transport, Public Protection, noise and vibration.....



Inspection initiative

- 2607 Sites inspected
- Approx 40% FFI action applied
- Excellent regional media coverage
 - Use of social media
- **2014/15 will take place in mid September to mid October**
- Aim to deliver 2000 inspections

New work for 2014/15

- **Health Inspection Initiative**
 - Starts 23rd June (TBC) – 2 weeks
 - 500 inspections
 - Larger sites
 - **Focus on:**
 - Hazardous substances (COSHH)
 - Manual handling
 - Noise & vibration
 - Welfare
 - Examine health management and role of client/designer/CDM-C if appropriate

New work for 2014/15

- **Home building**
 - Inspection of up to 500 larger sites throughout year
 - **Focus on:**
 - Hazardous substances
 - Manual handling
 - Noise & vibration
 - Transport management
 - Supervision
 - Welfare

New work for 2014/15

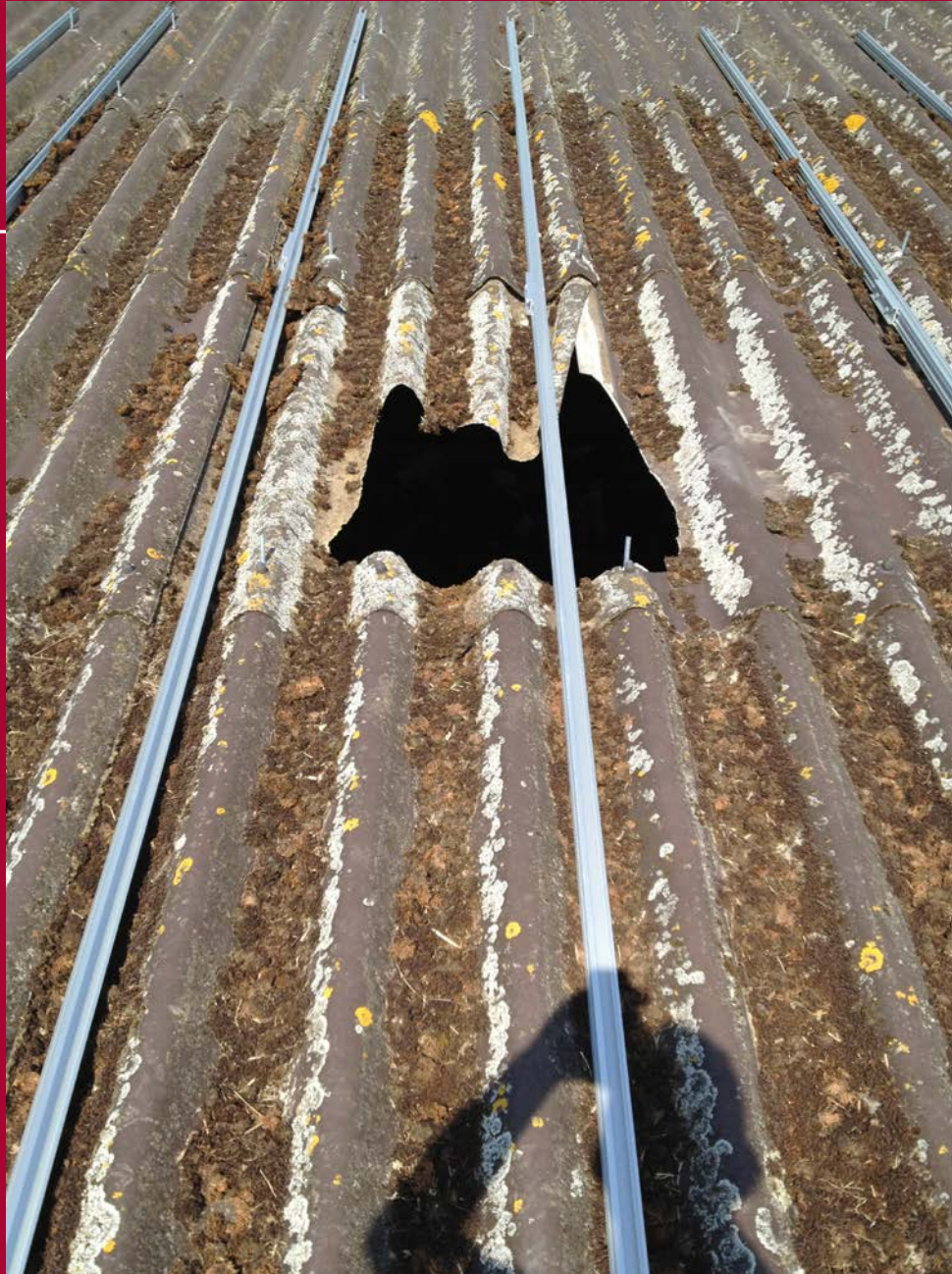
- **Loft conversions**
 - Inspection of up to 100* sites
 - **Focus on:**
 - WAH
 - Asbestos
 - Manual handling
 - Protecting the public
 - Duty holder event – minimum 1 per unit





New work for 2014/15

- **Commercial solar panel installation**
 - Inspection of up to 100* sites
 - Focus on:
 - WAH, inc' fragile materials
 - Asbestos
 - Manual handling
 - Client role
 - Duty holder event – minimum 1 per unit (CITB Info Sheet).



2014/15 Continuing Work

- Fragile Materials

- Inspection by CD; inc,
 - 250 Commercial roofing
 - Construction on farms
- Inspection FOD - continues
- Estates Excellence events
- Busy Builder Sheets
- WWT SHADs
- **EXAMINATION OF CLIENT ROLE IN ALL VISITS.**

2014/15 Continuing Work

- **Improving Leadership via LWIT**
 - Current IDHC programme to be wound down
- Replace with:
 - Each FMU to organise an LWIT briefing for local duty holders (10-15 attendees)
 - They create an action plan
 - Follow-up with attendees 3 months later
 - Decide on further action

2014/15 Continuing Work

- Large contractor interventions
 - Top 30*, includes -
 - Leadership (directors)
 - Health management
 - Emerging from recession – supervision
- TDS
 - 40 site inspections
- Timber Frame Buildings
 - 40 site inspections

Summary

- 11,000 inspections
 - 35% Small Sites
 - 30% Refurbishment
 - 11% Asbestos
 - 5% Home build
 - 5% Major projects & large contractors
 - 15% Local priority
- Sept/Oct Inspection initiative – 2000 inspections
- June - Health Inspection Initiative – 500 visits
 - Look at systemic failings / CDM duty holders

Summary con't

- Home Build – 500 inspections
- Fragile Roofs
 - All* commercial roof work
 - Construction on farms*
 - Include in any industry talks
 - **Incidents - mandatory client investigation**
- 40 Timber Frame interventions
- 40 TDS interventions

Summary con't

- **WWT**
 - 60 events & 2 new Groups
- **Loft Conversions**
- **Loft Conversions**
 - Up to 100 visits
 - Unit event
 - *Busy builder sheet*
- **Commercial Solar Panel Installers**
 - Up to 100 visits
 - Unit event
 - Client role