

S.T.A. SYSTEM - SAFE TRUSS ACCESS



PROBLEM SOLVED!

One of the major problems facing the housebuilding industry is *how to safely fix bracing timbers to roof trusses*.

The **S.T.A. System** is a bespoke access system which makes truss bracing safer, easier and faster.

SAFER

- The **S.T.A. System** provides a safe means of access to higher levels of the truss where timbers are fixed
- Extends above waist height to provide restraint for user and to meet **HSE** guidelines
- Trusses to each side of the operative provide additional protection
- Lateral restraint brackets prevent sideways movement of the ladder
- Joiners do not need to climb trusses

EASIER/FASTER

- **S.T.A. System** takes seconds to position
- One **S.T.A. System** position fixes four trusses (two trusses on either side of the ladder)
- No need for joiners to improvise and form timber ladders - saves on time and timber
- Compact system gives ease of handling between trusses

Due to the short duration work and multi work positions the **S.T.A. System is a practical, cost effective solution to what is an extremely high risk work activity**. Fixing braces to roof trusses can involve potential falls of 5 to 7m, until now without any safe practical method of working.

METHOD OF WORKING

- Welded spreader bar at the base of the ladder sits securely into a "V" point along the truss.
- Upper spreader bar spans gap between trusses at high level
- Extends to correct level to suit truss height
- S.T.A. System works even if there is no decking or scaffold below the roof trusses

SPECIFICATION

- Class 1 BS2037 - Industrial strength
- Length 2.7m (Closed) 4.2m (Open)
- Weight: 13.9kg

SO EASY TO USE JOINERS WILL PREFER THIS METHOD OF WORKING



A LOW COST AND SIMPLE SOLUTION TO A HIGH RISK, HIGH LEVEL ACTIVITY!



Safety Platforms Ltd,
Tel. 01924 420820
Email: info@safetyplatforms.co.uk
Web: www.safetyplatforms.co.uk

www.safetyplatforms.co.uk

S.T.A. SYSTEM - SAFE TRUSS ACCESS



Extends above waist height to provide restraint for user and to meet HSE guidelines



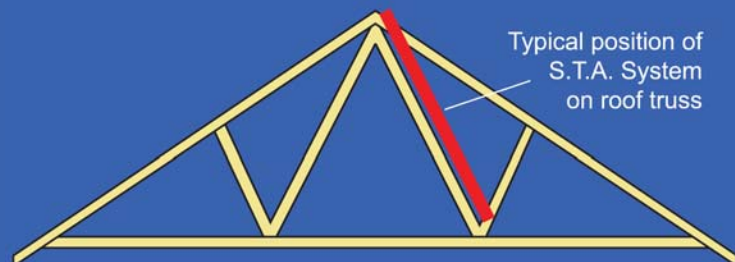
One S.T.A. System position fixes four trusses (two trusses on either side of the ladder)



S.T.A System prevents potential falls of 5 to 7m



S.T.A. System quickly, easily and safely fitted into base of roof truss



Typical position of S.T.A. System on roof truss

Safety Platforms Ltd,
Tel. 01924 420820
Email: info@safetyplatforms.co.uk
Web: www.safetyplatforms.co.uk

www.safetyplatforms.co.uk