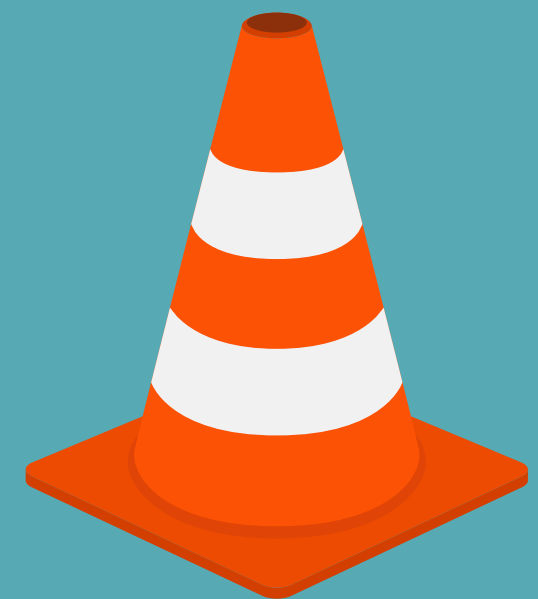
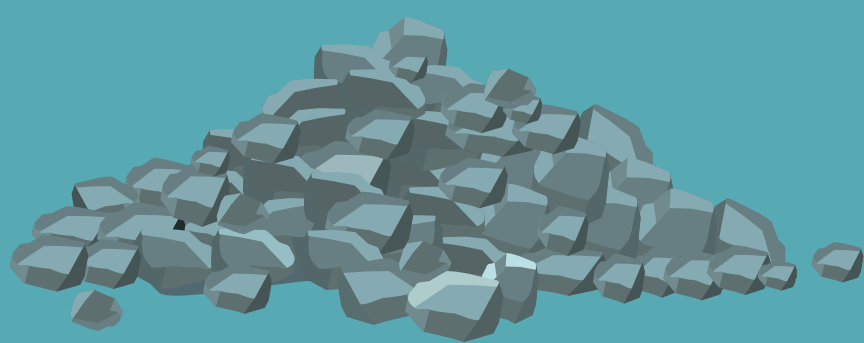


Slips, Trips, and Falls Prevention

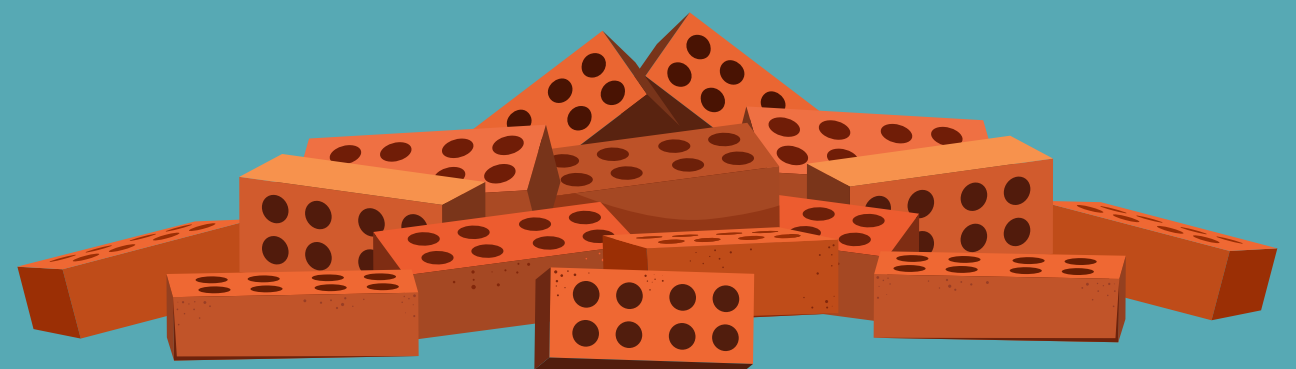
# TAKING A BREAK?

Make sure you abide by these housekeeping rules



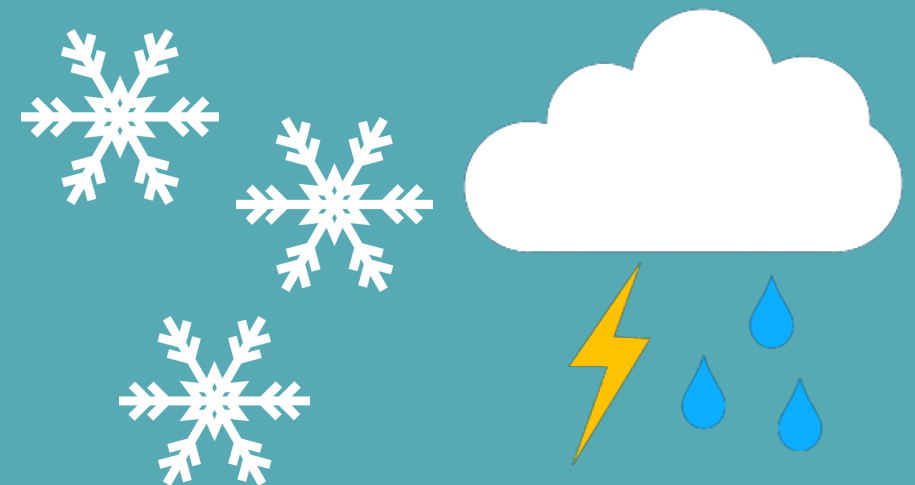
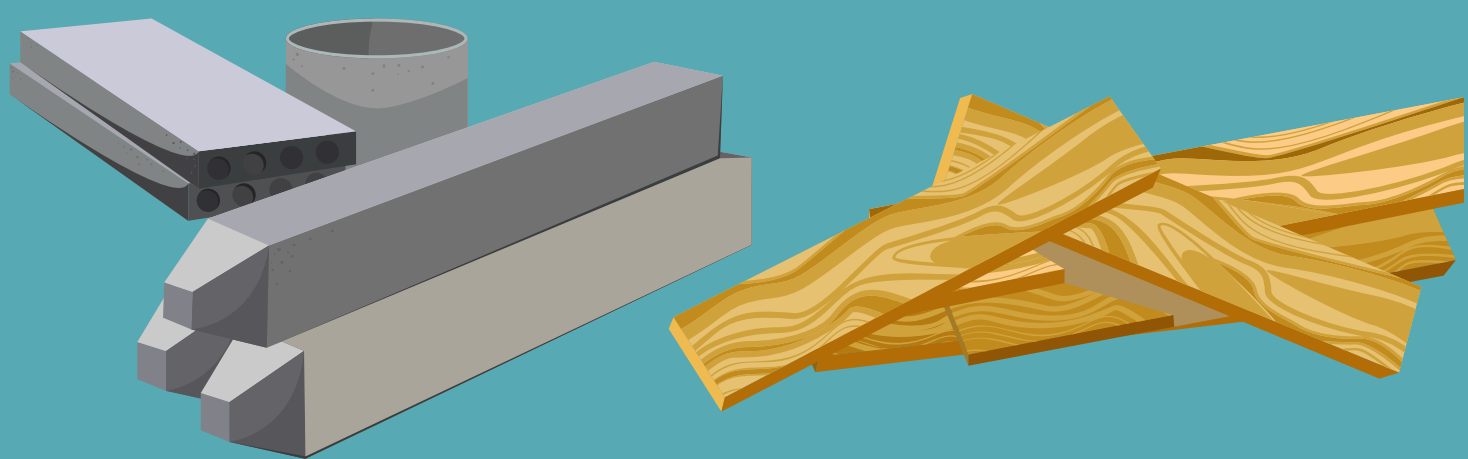
Leave your work area tidy by clearing away tools and rubbish

Use the pedestrian route and think about traffic management routes



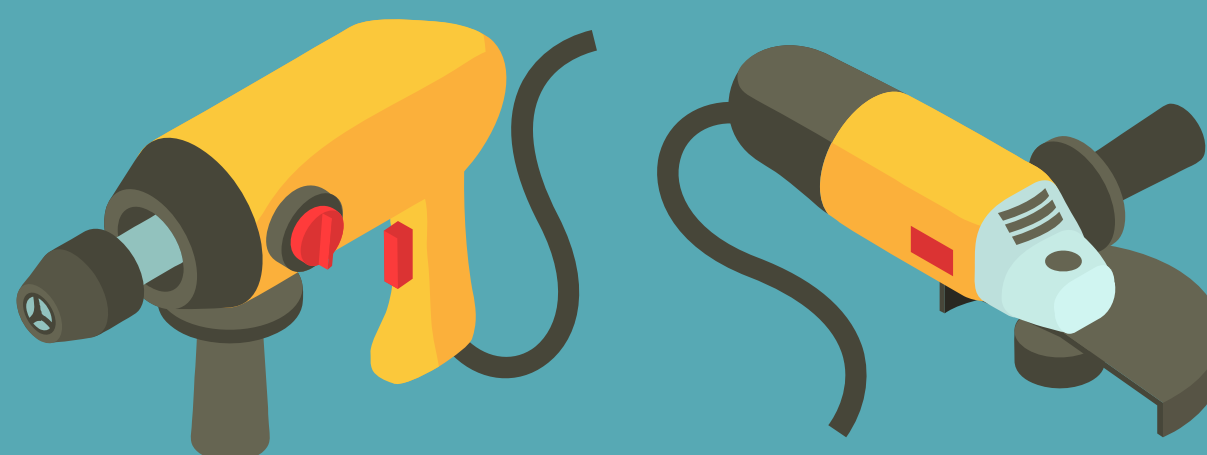
Clean your safety boots and remove wet clothing

Check your access into plots and onto scaffolding is safe



Report any hazards or rubbish you can't remove

Be aware of weather conditions that may cause wet or slippery surfaces



Be aware of others using corded tools

