

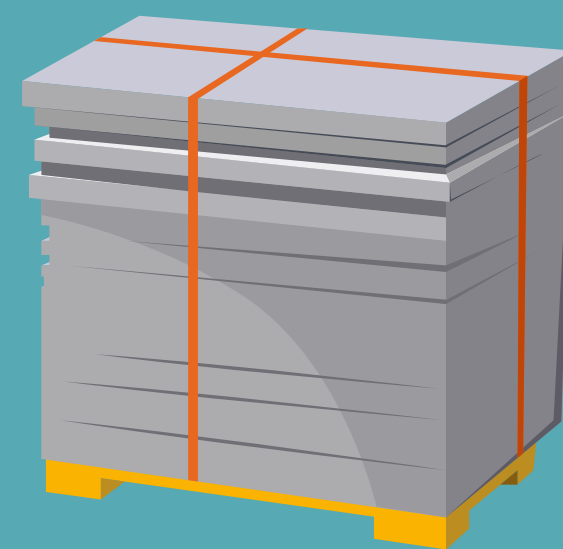
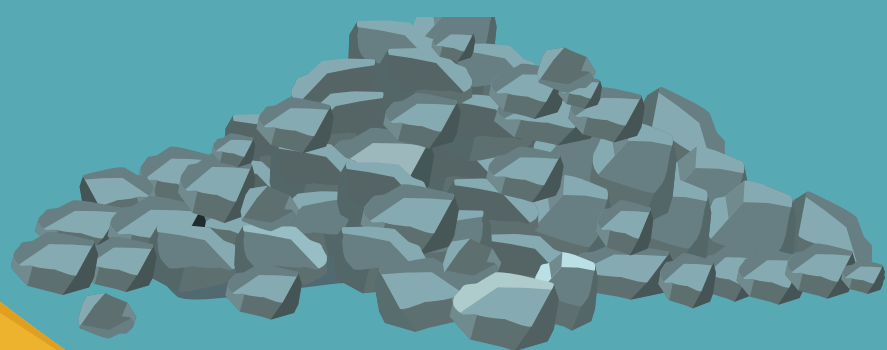
Slips, Trips, and Falls Prevention

LEAVING SITE?

Make sure you abide by these
housekeeping rules



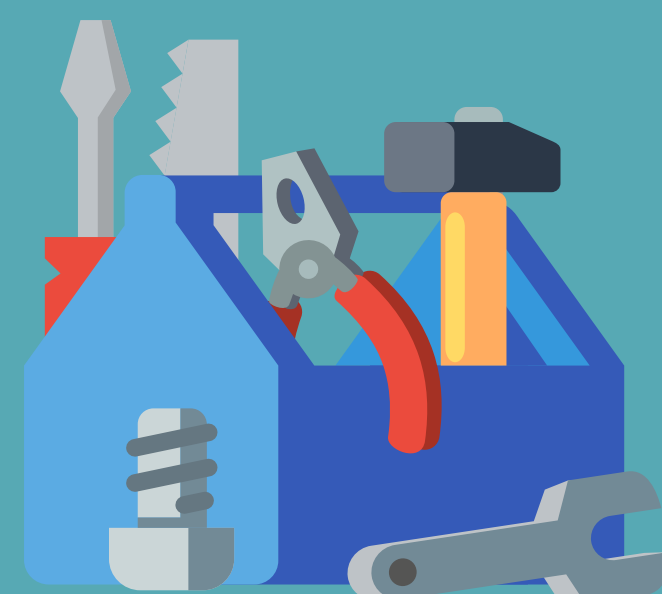
Clear your work area access and exit



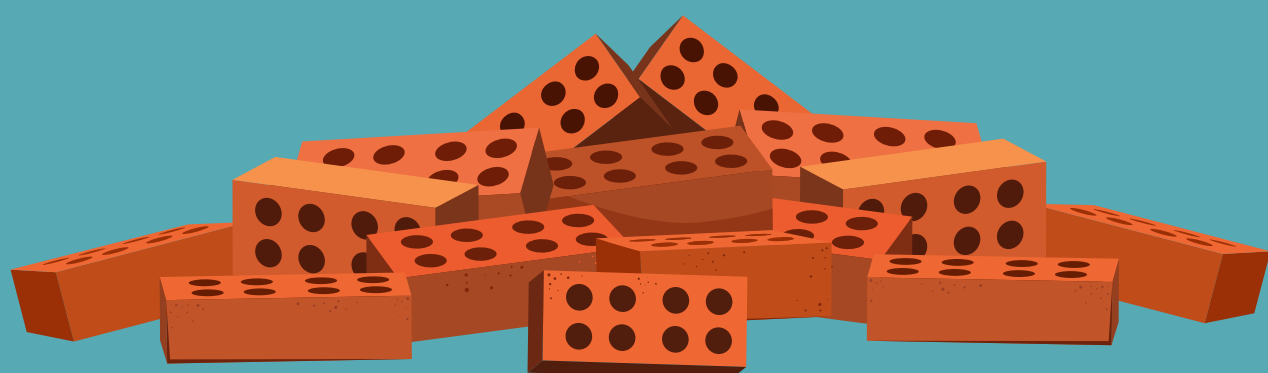
Store materials in designated areas



Place rubbish in relevant skips



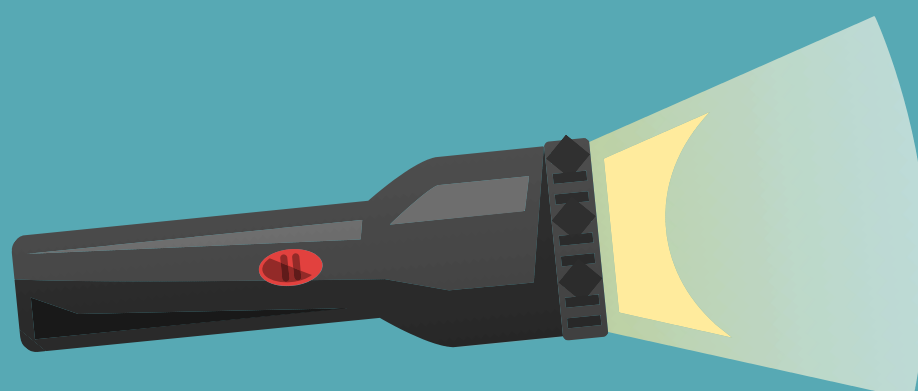
Put your tools away



See that materials are stored
safely on the scaffold



Use the pedestrian route and think
about traffic management routes



Be careful in poor lighting conditions