



### Total Construction Costs

OCT 2020:  
£374.2m

FEB 2023:  
£153.7m

Difference  
-£220.5m

### Direct FTE Construction Jobs Per Year

OCT 2020

1219

FEB 2023

501

Difference

-718

### Indirect FTE Construction Jobs Per Year

1658

681

-977

OCT 2020

FEB 2023

Difference

### Gross Value Added

£218.2m

£89.6m

-£128.6m

Difference

### Optional Extras Total Spend

OCT 2020:  
£9.2m

FEB 2023:  
£3.8m

Difference:  
-£5.4m



# County Durham Plan - Economic Output

### First Occupations Total Retail Spend

OCT 2020:  
£12.7m

FEB 2023:  
£5.2m

Difference:  
-£7.5m



### Total Gross Household Expenditure

OCT 2020

£68.4m

FEB 2023

£28.1m

Difference

-£40.3m

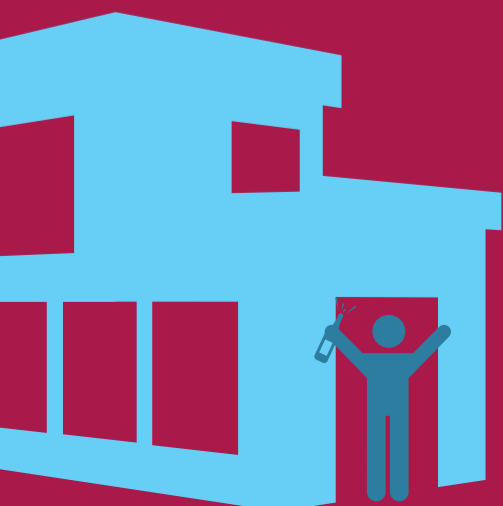


### New Home Bonus

OCT 2020:  
£12.7m

FEB 2023:  
£5.2m

Difference:  
-£7.5m



### Council Tax Receipts

OCT 2020: £3.2m

FEB 2023: £1.3m

Difference:  
-£1.9m



### Section 106

Difference  
-£17.6m



OCT 2020:  
£29.9m

FEB 2023:  
£12.2m